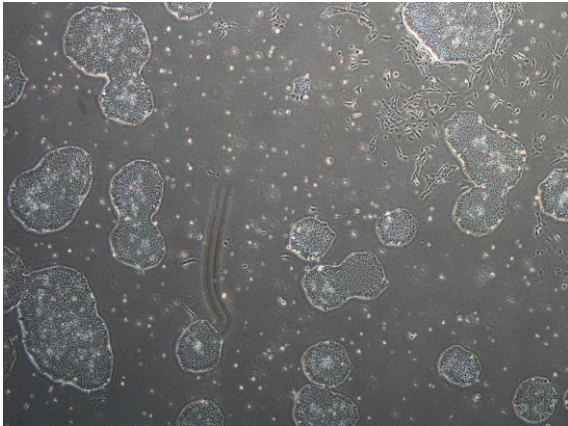
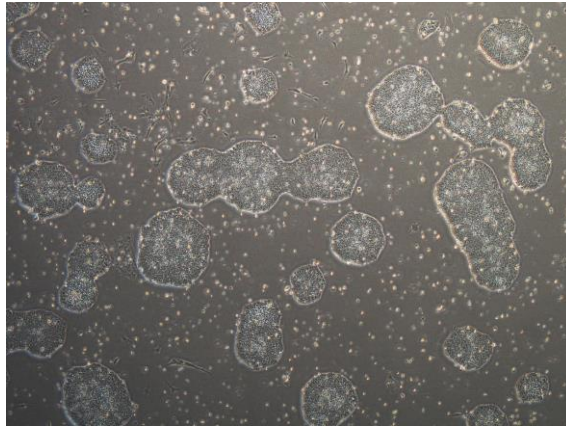


【 CiRA-j-1216 】 Morphology of iPSC colonies

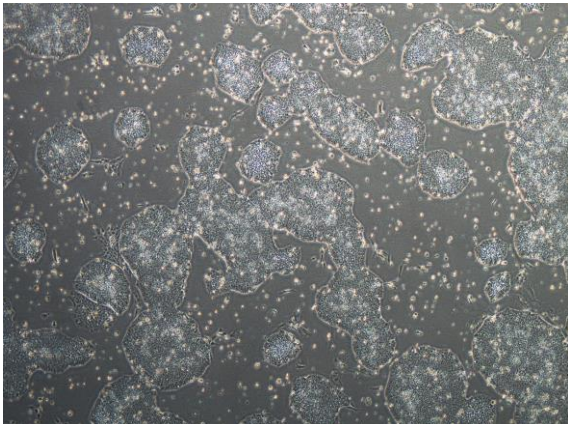
CiRA-j-1216-A: passage-3



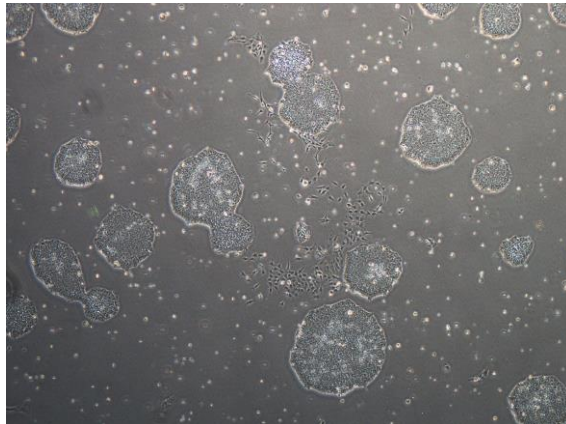
CiRA-j-1216-B: passage-3



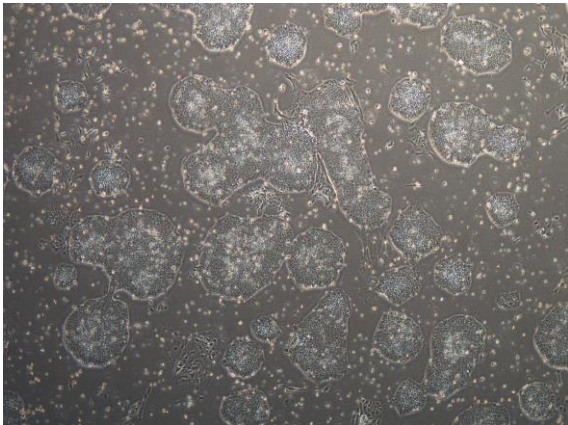
CiRA-j-1216-C: passage-3



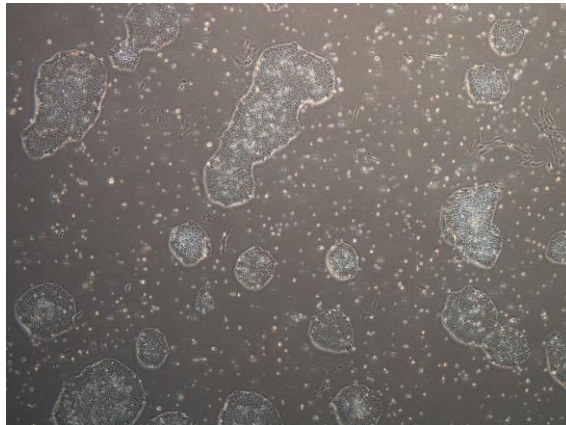
CiRA-j-1216-D: passage-3



CiRA-j-1216-E: passage-3



CiRA-j-1216-F: passage-3



(All images were captured at 4x magnification)